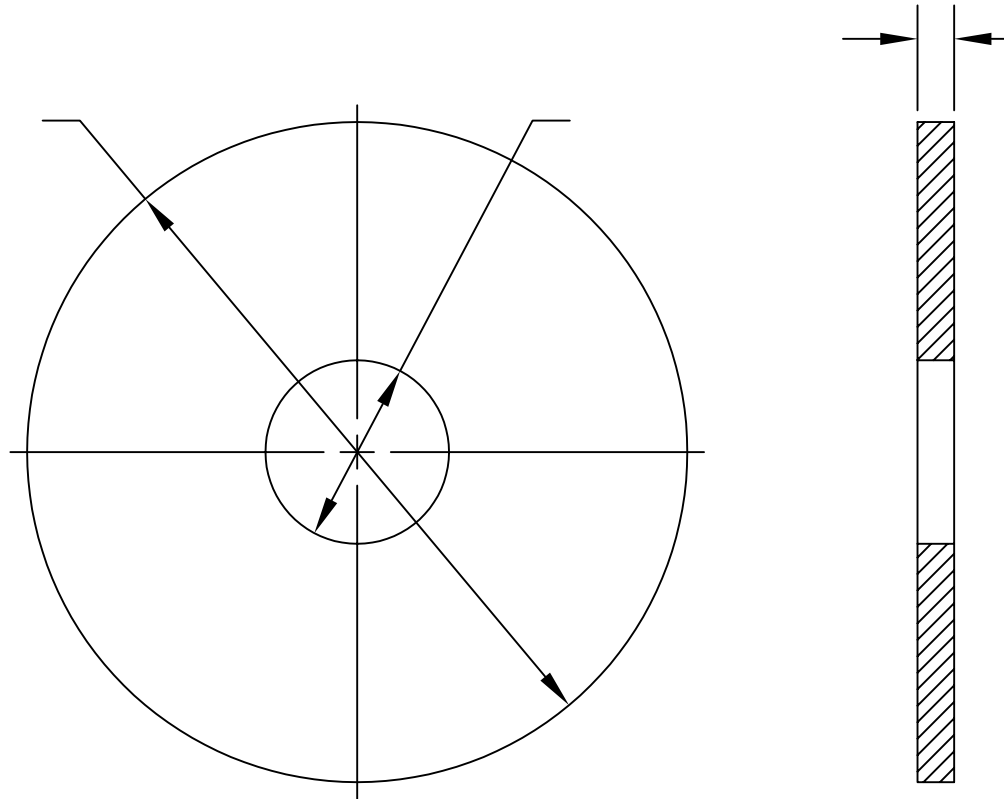


REVISIONS				
ZONE	REV.	DESCRIPTION	APPROVED	DATE



GROUND AND POLISHED



TOLERANCES & STANDARDS UNLESS SPECIFIED	
DECIMAL INCHES	MILLIMETERS
X.X = +/-0.020	X = +/- 0.38mm
X.XX = +/-0.010	X.X = +/-0.25mm
X.XXX = +/-0.005	X.XX = +/-0.13mm
FRACTIONS OR WHOLE INCHES = ±1/64"	
ANGLES = ±1.0°	
SURFACE FINISH	
G.D. 32/BETTER	G&P 80/50

DO NOT SCALE DRAWINGS

BREAK ALL EDGES  
0.010" MIN.

⊙ 0.010 TIR    ▱ 0.005

⊥ 0.010/6.0"    // 0.005

UNITED SILICA PRODUCTS, INC.  
3 PARK DRIVE, FRANKLIN, NEW JERSEY 07416  
PH (973) 209-8854 FAX (973) 209-8864  
E-MAIL sales@unitedsilica.com

TITLE TOP COVER

CUST. \_\_\_\_\_ DWG NO. \_\_\_\_\_ REV. \_\_\_\_\_

MATERIAL GE124 DRAWN BY \_\_\_\_\_

APPROVED BY \_\_\_\_\_

SCALE NONE SHEET \_\_\_\_\_ DATE \_\_\_\_\_

**PROPRIETARY**  
THE INFORMATION CONTAINED HEREIN IS THE PROPERTY OF UNITED SILICA PRODUCTS INC., AND MAY NOT BE REPRODUCED OR DISCLOSED IN WHOLE OR IN PART WITHOUT THE WRITTEN PERMISSION OF UNITED SILICA PRODUCTS INC.