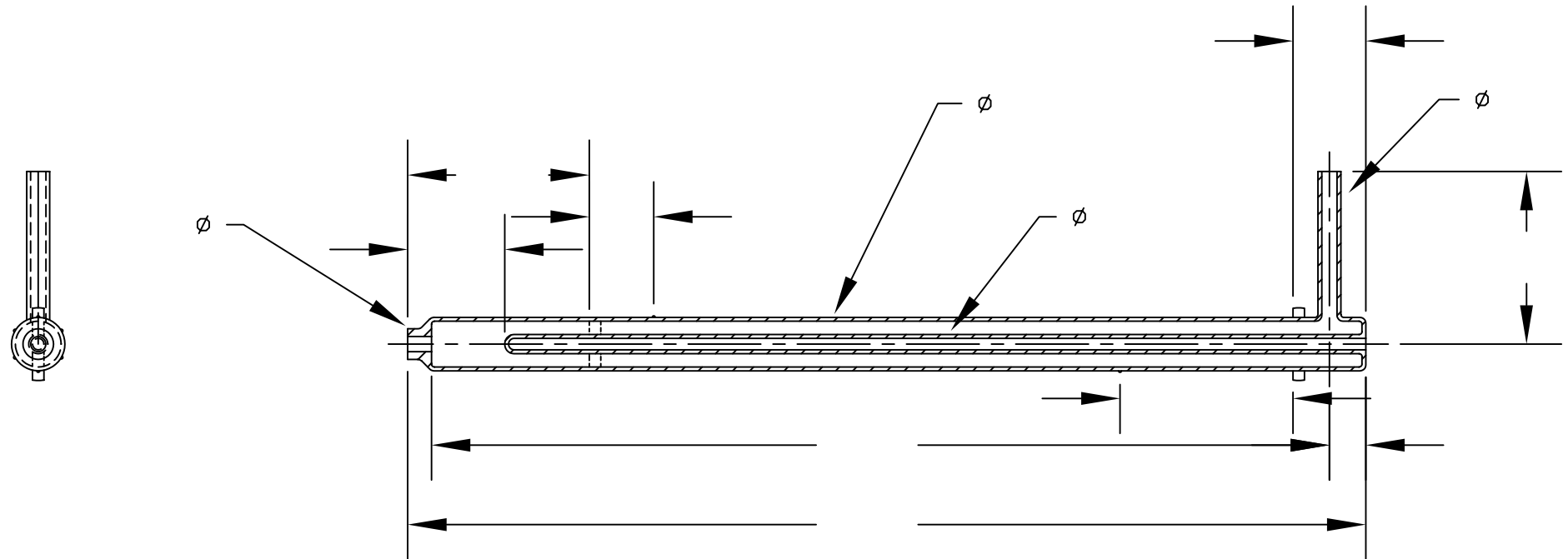


REVISIONS				
ZONE	REV.	DESCRIPTION	APPROVED	DATE



UNLESS NOTED BREAK
ALL EDGES 0.010"
MINIMUM

PROPRIETARY
THE INFORMATION CONTAINED HEREIN IS
THE PROPERTY OF UNITED SILICA
PRODUCTS INC., AND MAY NOT BE
REPRODUCED OR DISCLOSED IN WHOLE OR
IN PART WITHOUT THE WRITTEN
PERMISSION OF UNITED SILICA PRODUCTS
INC.

FILE NAME: TITLE.DWG REV.1

TOLERANCES	
DECIMAL INCHES	MILLIMETERS
X.X = +/-0.1	X = +/- 1
X.XX = +/-0.02	X.X = +/-0.5
X.XXX = +/-0.010	X.XX = +/-0.25
ANGULARITY +/- 1°	
FRACTIONS +/- 1/8"	

QTZ. TUBE PER GE STD. TOL.

UNITED SILICA PRODUCTS, INC. 3 PARK DRIVE, FRANKLIN, NEW JERSEY 07416 PH (973) 209-8854 FAX (973) 209-8864 E-MAIL quartzsales@unitedsilica.com		
TITLE QUARTZ INJECTOR, H2 EXT. TORCH		
CUST.	DWG NO.	REV. -0-
MATERIAL		DRAWN BY
SCALE		APPROVED BY
SHEET	DATE	