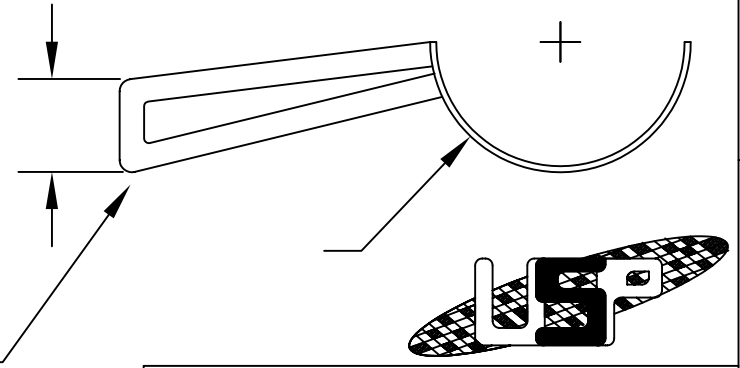
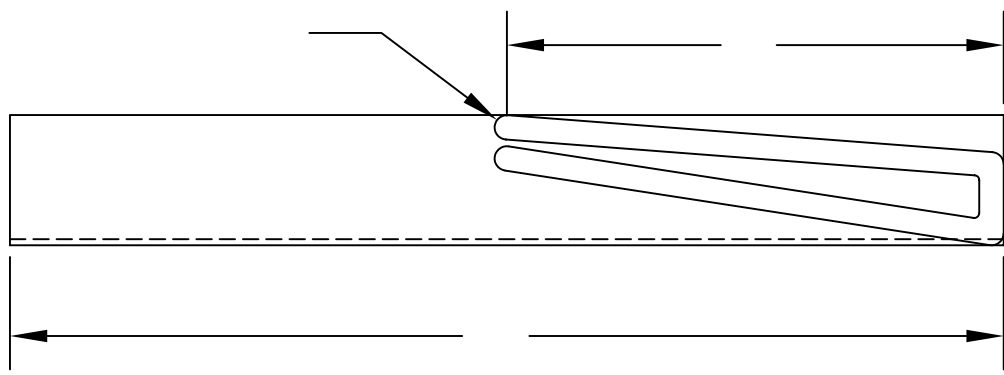
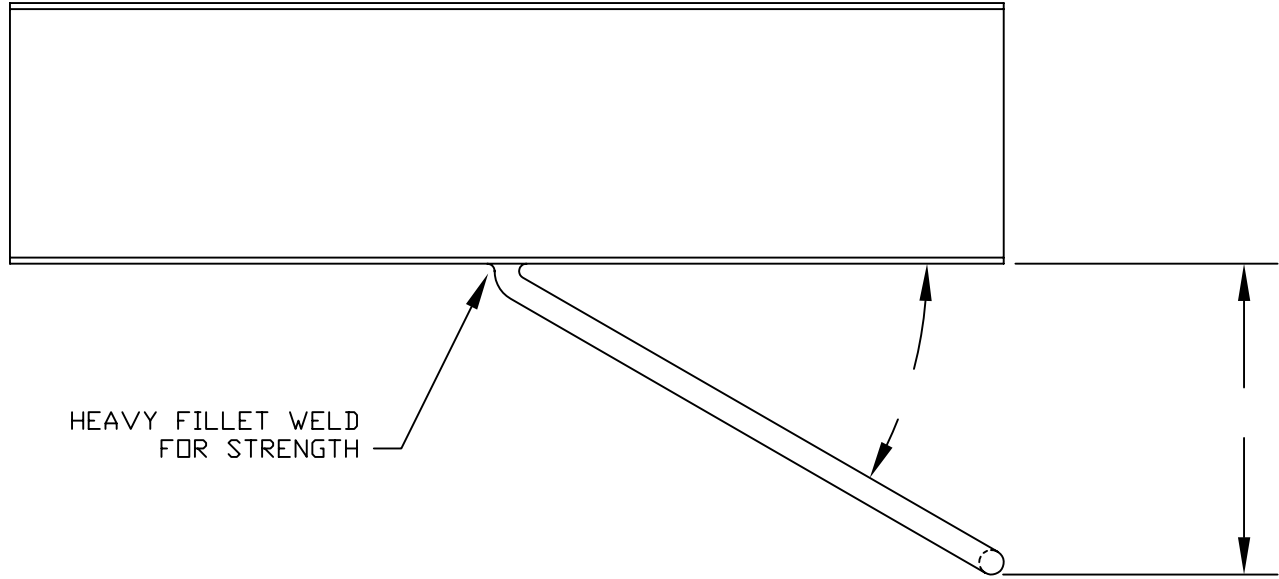


REVISIONS				
ZONE	REV.	DESCRIPTION	APPROVED	DATE



UNLESS NOTED BREAK ALL EDGES 0.010" MINIMUM

PROPRIETARY

THE INFORMATION CONTAINED HEREIN IS THE PROPERTY OF UNITED SILICA PRODUCTS INC., AND MAY NOT BE REPRODUCED OR DISCLOSED IN WHOLE OR IN PART WITHOUT THE WRITTEN PERMISSION OF UNITED SILICA PRODUCTS INC.

FILE NAME: TITLE.DWG REV.1

TOLERANCES	
DECIMAL INCHES	MILLIMETERS
X.X = +/-0.1	X = +/- 1
X.XX = +/-0.02	X.X = +/-0.5
X.XXX = +/-0.010	X.XX = +/-0.25
ANGULARITY +/- 1°	
FRACTIONS +/-1/8"	
QTZ. TUBE PER GE STD. TOL.	

UNITED SILICA PRODUCTS, INC.
 3 PARK DRIVE, FRANKLIN, NEW JERSEY 07416
 PH (973) 209-8854 FAX (973) 209-8864
 E-MAIL quartzsales@unitedsilica.com

TITLE: BOAT HOLDER

CUST.	DWG NO.	REV.
MATERIAL GE214/EQ		DRAWN BY
SCALE		APPROVED BY
SHEET	DATE	