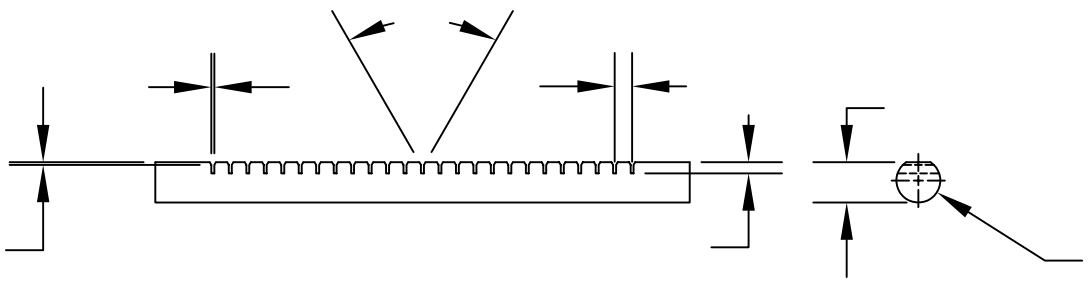
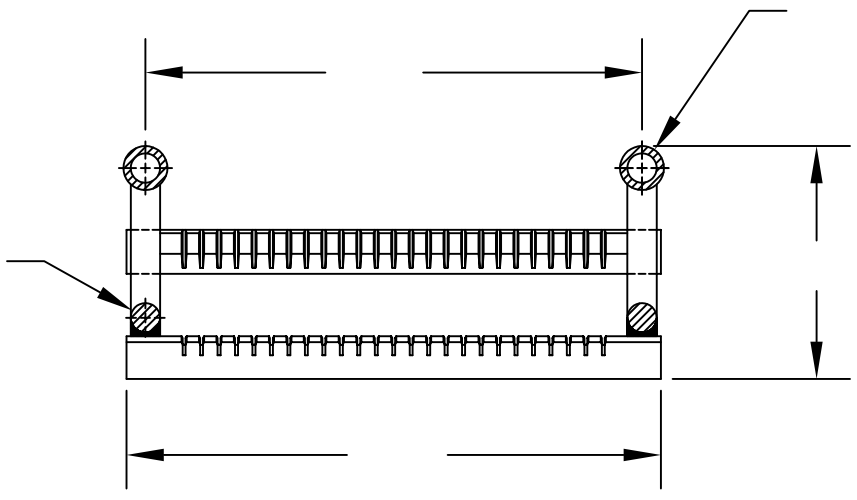


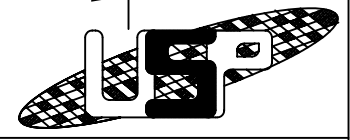
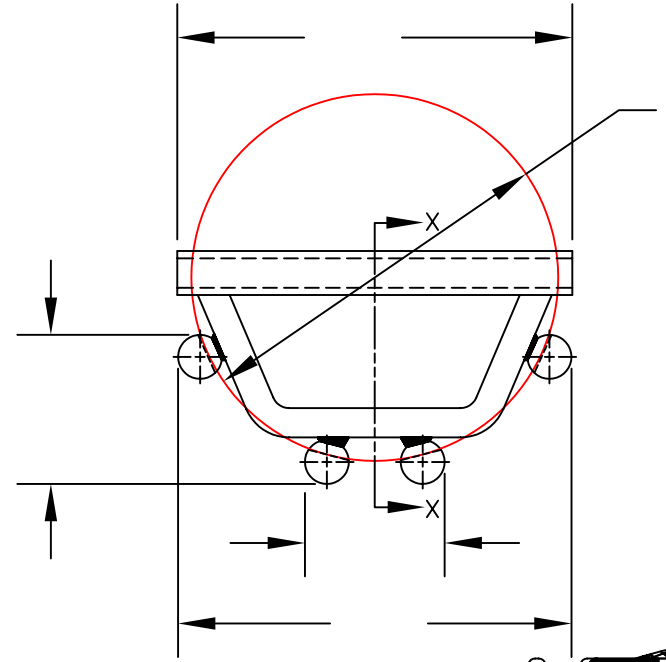
| REVISIONS | | | | |
|-----------|------|-------------|----------|------|
| ZONE | REV. | DESCRIPTION | APPROVED | DATE |
| | | | | |
| | | | | |
| | | | | |



"A" SLOT WIDTH = _____



SECTION XX



UNLESS NOTED BREAK ALL EDGES 0.010" MINIMUM

PROPRIETARY
 THE INFORMATION CONTAINED HEREIN IS THE PROPERTY OF UNITED SILICA PRODUCTS INC., AND MAY NOT BE REPRODUCED OR DISCLOSED IN WHOLE OR IN PART WITHOUT THE WRITTEN PERMISSION OF UNITED SILICA PRODUCTS INC.

FILE NAME: TITLE.DWG REV.1

| TOLERANCES | |
|----------------------------|----------------|
| DECIMAL INCHES | MILLIMETERS |
| X.X = +/-0.1 | X = +/- 1 |
| X.XX = +/-0.02 | X.X = +/-0.5 |
| X.XXX = +/-0.010 | X.XX = +/-0.25 |
| ANGULARITY +/- 1° | |
| FRACTIONS +/- 1/8" | |
| QTZ. TUBE PER GE STD. TOL. | |

UNITED SILICA PRODUCTS, INC.
 3 PARK DRIVE, FRANKLIN, NEW JERSEY 07416
 PH (973) 209-8854 FAX (973) 209-8864
 E-MAIL quartzsales@unitedsilica.com

TITLE MEDIUM PROFILE 100MM 25 SLOT BOAT

| | | |
|-------------------|---------|----------------|
| CUST. | DWG NO. | REV. |
| | | -0- |
| MATERIAL GE214/EQ | | DRAWN BY RMK |
| | | APPROVED BY JB |
| SCALE | SHEET | DATE |
| | | |